

AMEYA RESIDENCY

2BHK & 3BHK APARTMENT FOR SALE

- GROUND + 22 STOREY BUILDING
- CAR PARKING TOWER UPTIL 21 FLOORS
- STACK PARKING
- RECREATIONAL AREA
- LAVISH DOUBLE HEIGHT ENTRANCE LOBBY
- 3 LIFTS
- TERRACE GARDEN

V.N PURAV MARG

PROPOSED PHASE III

PHASE II
PRABHUNAM CHS.
GROUND + 22 FLOORS

PHASE I
GURUPRASAD CHS
GROUND + 22ND FLOOR



2BHK & 3BHK

APARTMENT FOR SALE

RERA CARPET AREA

2BHK

FLAT 1 - 665.00 SQ.FT
 FLAT 2 - 730.00 SQ.FT
 FLAT 3 - 700.00 SQ.FT

3BHK

FLAT 4 - 930.00 SQ.FT

- 2 PASSENGER LIFTS
- 1 FIRE LIFT
- WIDE VENTILATED PASSAGE
- ONLY 4 FLATS PER FLOOR



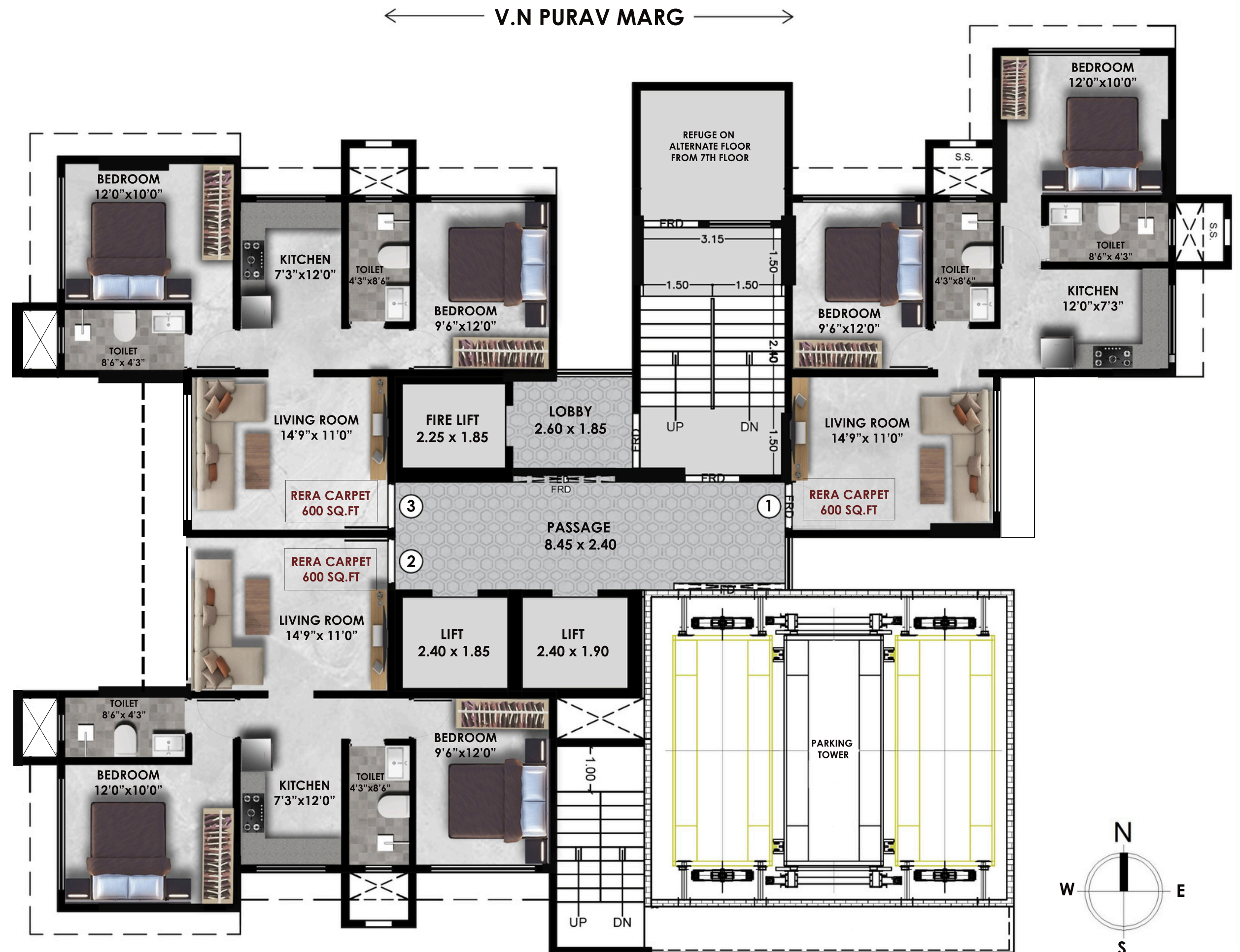
GURUPRASAD
 TYPICAL FLOOR PLAN



2BHK

APARTMENTS FOR SALE
1ST TO 10TH FLOOR

- FLAT 1 – 600 SQ.FT
- FLAT 2 – 600 SQ.FT
- FLAT 3 – 600 SQ.FT
- 2 PASSENGER LIFTS
- 1 FIRE LIFT
- WIDE VENTILATED PASSAGE
- ONLY 3 FLATS PER FLOOR



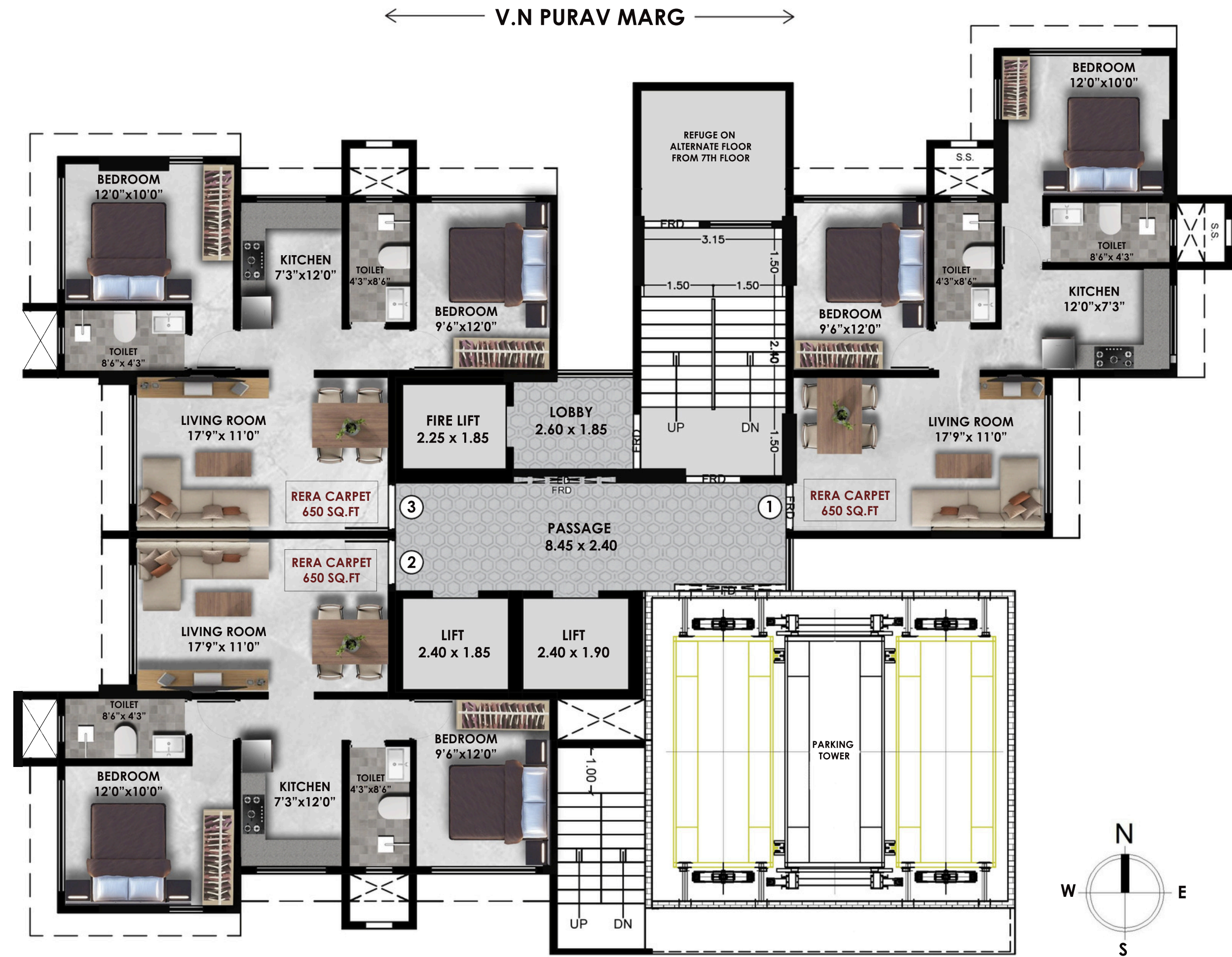
**PRABHUNAM
TYPICAL FLOOR PLAN**



2BHK

APARTMENTS FOR SALE
11TH TO 22ND FLOOR

- FLAT 1 - 650 SQ.FT
- FLAT 2 - 650 SQ.FT
- FLAT 3 - 650 SQ.FT
- 2 PASSENGER LIFTS
- 1 FIRE LIFT
- WIDE VENTILATED PASSAGE
- ONLY 3 FLATS PER FLOOR



**PRABHUNAM
TYPICAL FLOOR PLAN**